

ASCO BOSNIA d.o.o.

SCREW CONVEYOR BIOMASS



SCREW CONVEYOR BIOMASS

The screw conveyor is the ideal solution for filling biomass such as pellets and wooden chips into storage rooms. The biomass is loaded via a hopper and then transported into the storage room through the filling auger. The robust construction ensures a reliable material transport.

SCREW CONVEYOR BIOMASS


The screw conveyor is ideal solution for filling biomass storage rooms like pellets and wooden chips.

The fuel is loaded in hopper and then transported into the storage room trough the filling auger. The robust screw conveyor with robust loading hopper ensures reliable material transport. The adjustable cover plate allows the delivery rate to be adapted to the wood chips size and optimal distribution is guaranteed

FEATURES

In addition to the standard screw conveyor as shown on the photo, we also offer a wide range of different screw conveyors depending on our customers' requests and required loading methods.

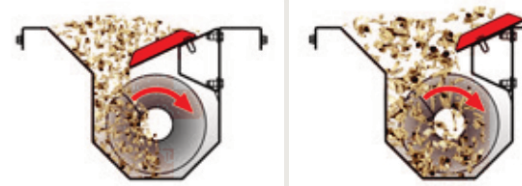
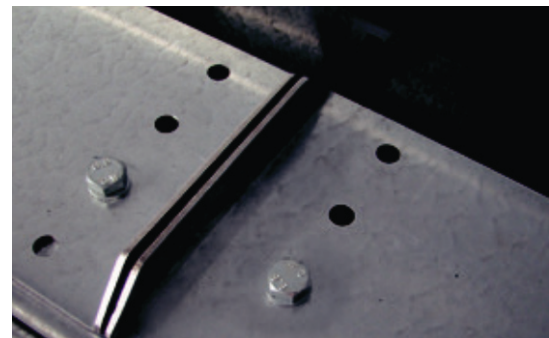
 Ideal for biomass storage rooms

 Robust technology

 Adjustable cover plate

TECHNICAL DATA

Dimensions: L=7,650 mm
H=6,030 mm
W=1,255 mm



ASCO BH d.o.o.

Industrijska Zona b.b.
78255 Aleksandrovac
BOSNIA and HERZEGOWINA

Tel.: +387 66 154 778

office@asco-bh.com
www.asco-bh.com